



Model LB, zinc-plated version
Capacity 1.200 kg

Model LB, zinc-plated version
Capacity 350 kg

Console-mounted winch model LB

Capacity 150 - 1200 kg

Originally developed as offroad winch the console-mounted winch model LB is used today for a variety of lifting and pulling applications.

Features

- Light weight robust stamped steel housing.
- Spur gear drive for optimal efficiency and comfortable handling.
- Automatic load pressure brake for save holding of the load in any position. An unintentional brake release is prevented.
- All parts are zinc-plated for increased corrosion protection, drum with additional special coating.
- Easy and quick mounting to consoles, even under lifting conditions.

Options

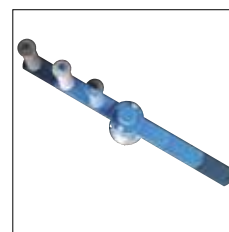
- Stainless steel version (mat. 1.4301) for increased corrosion protection.
- Free wheeling device for a quick manual unrolling of the unloaded rope.
- Variable crank with adjustable crank handle.
- Foldable crank with tiltable handle for use in confined spaces.



Model LB-VA, stainless steel version
Capacity 900 kg



Option: Foldable crank
with tiltable handle for use
in confined spaces.



Option: Variable crank
with adjustable crank
handle.

Technical data model LB

Model	Art.-No. Zinc-plated version	Art.-No. Free wheeling device	Art.-No. Stainless steel version	Capacity 1 st layer kg	Capacity top layer kg	Rope diameter mm	Useable rope length 1 st layer m	Useable rope length max. m	Lift per crank rotation mm	Required crank effort daN	Weight without rope kg
LB 150 VZ	030239016	-	-	150	75	4*	0.8	11	125	17	4.2
LB 350 VZ	030239015	-	-	350	170	4*	1.8	20	125	25	4.8
LB 650 VZ	040239004	-	-	650	290	6*	1	20	55	22	7.3
LB 900 VZ/ARA	040239006	040239007	-	900	400	7*	0.8	14	58	24	10
LB 1200 VZ/ARA	040239008	040239009	-	1200	430	7**	1	26	45	24	12.1
LB 250 VA	-	-	030239017	250	125	4*	1.8	19.5	125	20	4.8
LB 650 VA	-	-	040239012	650	290	6*	1	20	55	22	7.6
LB 900 VA	-	-	030239013	900	320	7*	1	26	45	24	12.1

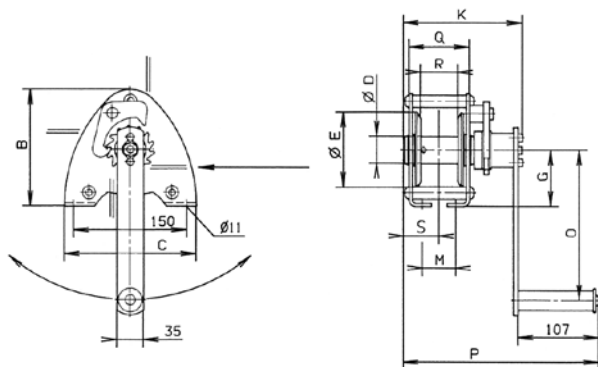
*recommended rope: DIN 3060 FE-znk 1770 sZ-spa

**recommended rope: DIN 3060 SE-znk 2160 sZ-spa

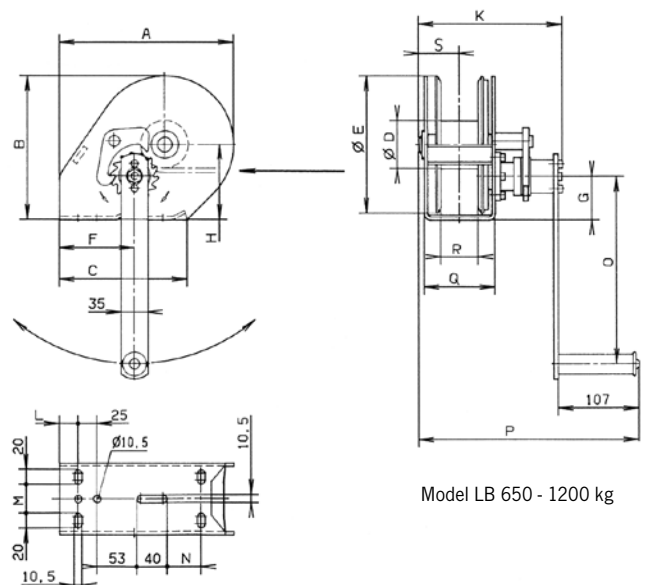
Dimensions model LB

Model	LB 150 VZ	LB 350 VZ	LB 650 VZ	LB 900 VZ LB 900 ARA	LB 1200 VZ LB 1200 ARA	LB 250 VA	LB 650 VA	LB 900 VA
Art.-No. Zinc-plated version	030239016	030239015	040239004	040239006	040239008	-	-	-
Art.-No. Free wheeling device	-	-	-	040239007	040239009	-	-	-
Art.-No. Stainless steel version	-	-	-	-	-	030239017	040239012	030239013
A, mm	-	-	232	232	273	-	232	273
B, mm	155	155	192	192	266	155	192	266
C, mm	175	175	210	210	240	175	210	240
Ø D, mm	36	36	63.5	63.5	63.5	36	63.5	63.5
Ø E, mm	100	100	183	183	255	100	183	255
F, mm	-	-	100	100	78	-	100	78
G, mm	75	75	58	58	75	75	58	75
H, mm	-	-	100	100	138	-	100	138
K, mm	159	189	192	192/226*	192/226*	191.5	190	190
L, mm	-	-	25	25	35	-	25	35
M, mm	45	75	38	38	30	75	38	30
N, mm	-	-	-	-	53	-	-	53
O, mm	200	320	250	320	320	320	250	250
P, mm	260	290	293	293/303*	293/303*	292.5	291	291
Q, mm	81	111	95	95	95	111	95	95
R, mm	50	80	50	50	50	80	50	50
S, mm	48	63	55	55	55	65.5	55	55

*Free wheeling device



Model LB 150 - 350 kg



Model LB 650 - 1200 kg



Model SW-K GAMMA
Capacity 800 kg

Pfaff winches are not designed for passenger elevation applications and must not be used for this purpose.



Model SW-K GAMMA
Capacity 500 kg

Console-mounted aluminium rope winch model SW-K GAMMA

Capacity 200 - 800 kg

Due to its rugged design, the aluminium rope winch is suitable for operation outdoors.

Features

- Compact aluminium housing and enclosed sprocket wheel drive. From a capacity of 500 kg with speed increasing ratio for small loads and quicker winding and unwinding of the unloaded rope.
- Spur gear drive for optimal efficiency and comfortable handling.
- Enclosed gear for the protection of parts inside, also for arduous applications.
- Low-friction shaft sliding bearings for improved rope lead-off and a longer service life of the winch.
- Wide rope drum for a large rope capacity with two rope attachment points.
- Easy and quick mounting.
- With integrated safety spring brake system and removable crank. The winches can be operated from either side.

Options

- Increased corrosion protection owing to additional paint finish.
- Drum separation web for double rope operation

Technical data model SW-K GAMMA

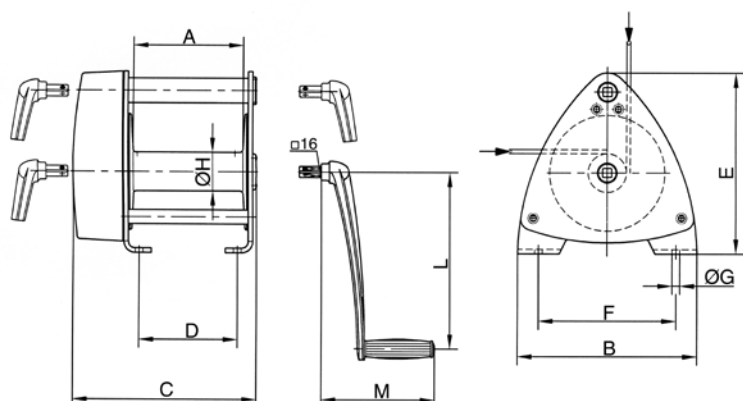
Model	Art.-No.	Capacity 1 st layer	Capacity top layer	Rope diameter*	Useable rope length 1 st layer	Useable rope length top layer	Lift per crank rotation	Required crank effort	Ratio	Weight without rope
		kg	kg	mm	m	m	mm	daN		kg
GAMMA 200	040270004	200	110	4	3.6	40	195	19	-	6
GAMMA 500	040270001	500	200	6	4.2	50	60/400**	12	6.57:1	14
GAMMA 800	040270006	800	350	7	5.3	78	36/280**	18	7.57:1	16

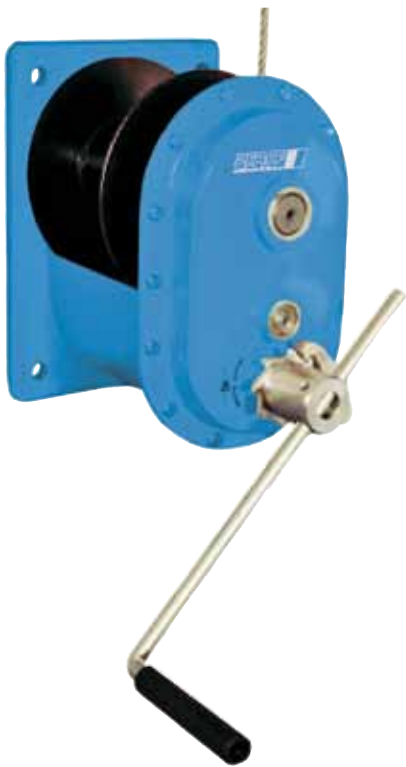
*recommended rope: DIN 3060 FE-znk 1770 sZ-spa

**load/speed increasing ratio

Dimensions model SW-K GAMMA

Model	GAMMA 200	GAMMA 500	GAMMA 800
Art.-No.	040270004	040270001	040270006
A, mm	120	120	200
B, mm	160	220	326
C, mm	192	330	336
D, mm	152	100	180
E, mm	165	267	327
F, mm	135	125	250
G Ø, mm	9.5	11	14
H Ø, mm	50	60	70
L, mm	320	250	320
M, mm	207	165	207





Manual winch with worm gear drive model MWS

Capacity 125 - 2000 kg

For the operation where no electricity is available or in a dirty environment.

Recommended rope diameter according to
DIN 3060 FE-znk 1770 sZ-spa.

The rope is not part of the delivery package.

Features

- Enclosed gear drive for protection of internal parts, even under tough working conditions.
- Spur gears on roller bearings, rope drum on plain bearings.
- Compact design.
- Easy and quick mounting onto walls, poles etc.
- They have a self-locking, anti-kickback and adjustable crank handle for fast lifting of smaller loads, resulting in lowest possible handle effort and rapid winding of the rope.
- Automatic load pressure brake for safe holding and extremely sensitive lowering of the load. Unintentional brake release is prevented even with swinging loads.
- They are suitable for operation in ambient temperatures of -20°C up to $+40^{\circ}\text{C}$.

Option

- Corrosion resistant version

! Pfaff winches are not designed for passenger elevation applications and must not be used for this purpose.

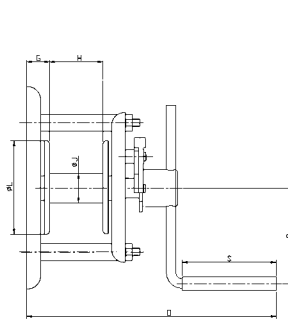
Technical data model MWS

Model	EAN-No. 4025092*	Capacity 1 st layer	Capacity top layer	Crank effort 1 st layer	Lift per crank rotation 1 st layer	Lift per crank rotation top layer	Ratio	Weight without rope	Rope diameter*	Breaking load of rope min. kN	Useable rope length 1 st layer m	Useable rope length max. m	Number of layers max.
		kg	kg	daN	mm	mm		kg	mm				
MWS 125	*080064	125	55	11	120	390	1:1	7	3	5.7	2.6	52	16
MWS 300	*080071	300	120	7	21	57	1:7.4	10	5	15.9	1.3	26	9
MWS 500	*080088	500	323	13	30	52	1:7.4	11	6	22.9	1.4	12	5
MWS 1000	*080095	1000	684	15	21	33	1:17	28	9	51	3.4	27	5
MWS 2000	*080101	2000	1712	24	16	19	1:25.7	32	13	106	2.3	7	2

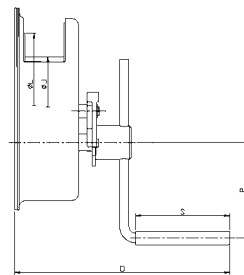
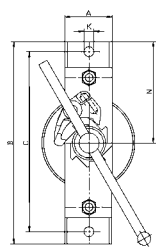
*recommended rope: DIN 3060 FE-znk 1770 sZ-spa

Dimensions model MWS

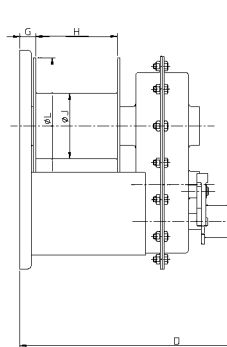
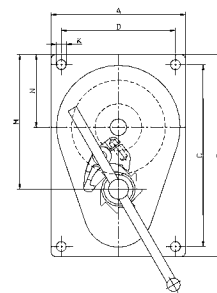
Model	MWS 125	MWS 300	MWS 500	MWS 1000	MWS 2000
A, mm	70	200	200	230	230
B, mm	305	300	300	340	340
C, mm	270	268	268	280	280
D, mm	168	168	168	180	180
G, mm	40	15	15	27	27
H, mm	85	60	60	126	126
Ø J, mm	32	50	70	102	121
K, mm	14	12	12	17	17
Ø L, mm	141	140	140	212	212
M, mm	198	198	198	266	288
N, mm	153	108	108	118	118
O, mm	325	263	263	425	425
P, mm	300	250	250	250	250
S, mm	128	128	128	128	128



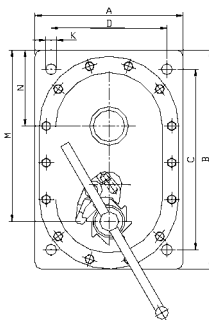
Model MWS, capacity 125 kg



Model MWS, capacity 300 - 500 kg



Model MWS, capacity 1000 - 2000 kg



Wall-mounted winch with worm gear drive model SW-W-SGO

Capacity 250 - 5000 kg

Wall-mounted winch with worm gear drive and load pressure brake for efficient lifting of heavy loads.

Features

- Housing and rope drums made out of robust steel plate.
- Worm gear drive with additional load pressure brake for safe holding of the load.
- Roller bearings ensure smooth running of the rope and increased lifetime of the winch.
- Second speed for fast lifting of smaller loads, resulting in lowest possible handle effort and rapid winding of the rope (for capacities of 2000 kg and above).
- Large drum capacity with two rope outlets.
- Variable crank with adjustable crank handle for capacities up to 1500 kg.
- Easy and quick mounting.



Model SW-W-SGO
Capacity 1500 kg

Options

- Corrosion resistant version
- Drum with separation web for operation with several ropes.
- Grooved rope drum for improved guidance of the rope.

Technical data model SW-W-SGO

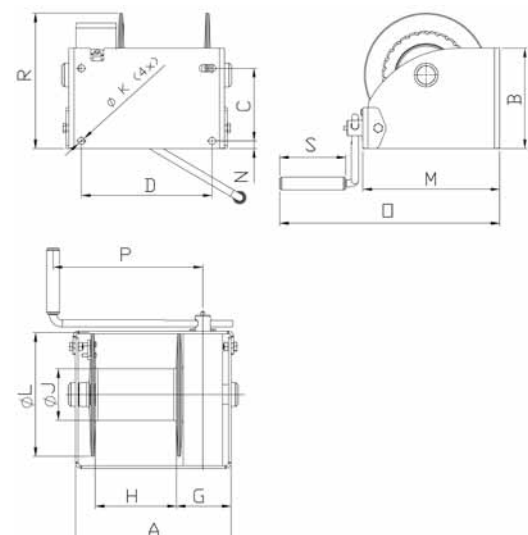
Model	Art.-No.	Capacity	Capacity	Rope diameter*	Useable rope length 1 st layer m	Useable rope length top layer m	Lift per crank rotation mm	Required crank effort daN	Weight without rope kg
		1 st layer kg	top layer kg						
SGO 250	040251003	250	100	5	2.3	44	29	6	13
SGO 500	040252026	500	238	6	3.7	54	30	11	16
SGO 1000	040253006	1000	500	9	4.5	46	21	10.6	26
SGO 1500	040253000	1500	850	10	4.5	38	18	16	28
SGO 2000	030254002	2000	1100	13	4	37	8/16**	9/18**	60
SGO 3000	030255009	3000	2000	16	5	34.5	7/14**	12/24**	78
SGO 5000	030256013	5000	3300	20	4.5	33.8	8/16**	25.2/50.4**	105

*recommended rope: DIN 3060 FE-znk 1770 sZ-spa

**1st/2nd speed

Dimensions model SW-W-SGO

Model	SGO 250	SGO 500	SGO 1000	SGO 1500	SGO 2000	SGO 3000	SGO 5000
Art.-No.	040251003	040252026	040253006	040253000	030254002	030255009	030256013
A, mm	238	269	302	302	410	436	436
B, mm	145	160	195	250	310	365	425
C, mm	100	115	141	178	196	251	316
D, mm	192	223	254	254	360	386	386
G, mm	106	107	110	111	137	137	137
H, mm	102	131	160	160	176	204	200
J Ø, mm	48	70	102	102	133	165	219
K Ø, mm	14	14	17	17	25	25	25
L Ø, mm	160	190	240	240	312	376	437
M, mm	191	221	266	278	383	443	495
N, mm	15	15	15	15	45	47	60
O, mm	354	384	429	441	-	-	-
P, mm	280	325	350	350	380	380	380
R, mm	171	192	264	306	420	527	604
S, mm	130	130	130	130	220	220	220



Compact aluminium rope winch with free-wheeling device model SW-KAL

Capacity 750 - 1120 kg

Console-mounted rope winches are used for superstructures on vehicles and trailers and when lifting and lowering loads.

Features

- Self-locking worm gear, free-wheeling device for ease of operation.
- Enclosed gear for the protection of internal parts, also for arduous applications.
- Low-friction shaft bearings for a longer service life of the winch.
- Easy and quick mounting.

Options

- Increased corrosion protection owing to additional paint finish.
- Mirror-image design.
- Design without free-wheeling device.
- Removable crank.



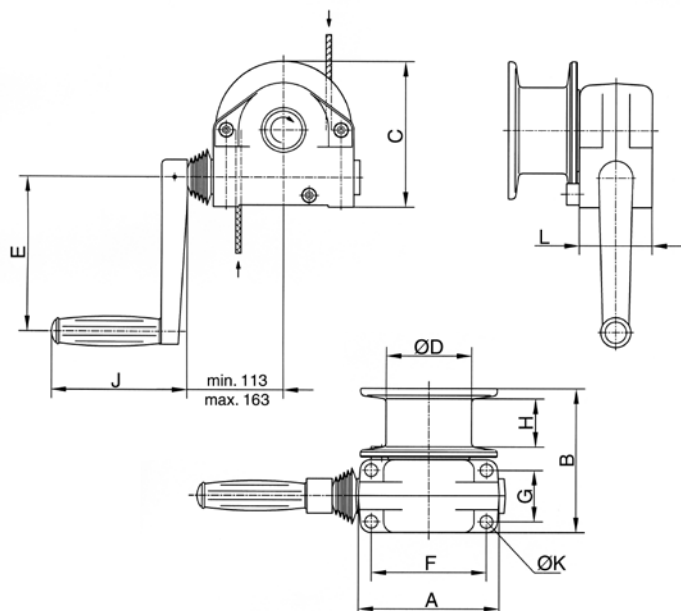
Technical data model SW-KAL

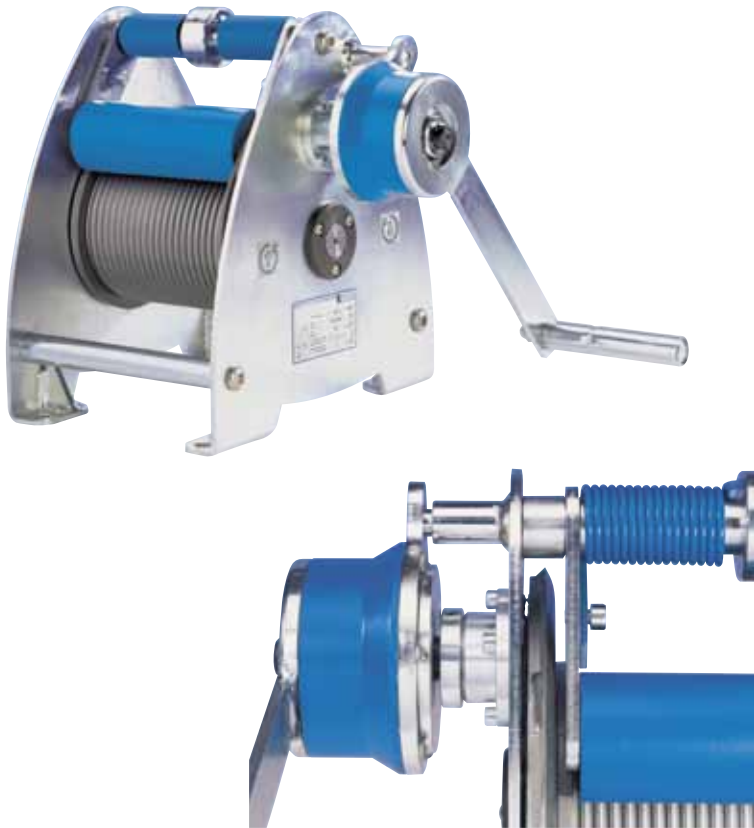
Model	Art.-No.	Capacity 1 st layer kg	Capacity top layer kg	Drum diameter mm	Rope diameter* mm	Useable rope length 1 st layer m	Useable rope length max. m	Lift per crank rotation 1 st layer mm	Lift per crank rotation top layer mm	Required crank effort daN	Weight without rope kg
KAL 750	030207004	750	600	100	6	1.3	10	15	17	20	7
KAL 1120	030208000	1120	600	63	7	0.5	10	11	16	22	7

*recommended rope: DIN 3060 SE-znk 1770 sZ-spa

Dimensions model SW-KAL

Model	KAL 750	KAL 1120
Art.-No.	030207004	030208000
A, mm	165	165
B, mm	168	168
C, mm	170	170
Ø D, mm	100	63
E, mm	180	180
F, mm	135	135
G, mm	60	60
H, mm	56	50
J, mm	160	160
Ø K, mm	13	13
L, mm	85	85





Console-mounted rope winch model SW-K LAMBDA (BGVC1)

Capacity 300 kg

The compact rope winch for applications on stages, in studios, theatres, etc.

Features

- State-of-the-art design with galvanized side sections for easy handling.
- Grooved drum for single-layer winding of the steel rope. An 18:1 ratio between drum and rope diameter increases the service life of the rope substantially.
- With spring-loaded rope pressure roller to prevent the unloaded rope from jumping off the drum.
- Gear rated for twice the nominal load.
- Spur gear drive for optimal efficiency and comfortable handling.
- The fitted safety crank with two spring brakes acting independently of each other for safe holding of the load in any position.
- Complies with the latest accident prevention regulations BGV C1 (DIN 56925) as well as the prototype and safety test (GS-test – tested safety) of the German committee for lifting equipment.

Options

- Drum extension for a larger rope capacity.
- Special grooves (several ropes)

Pfaff winches are not designed for passenger elevation applications and must not be used for this purpose.

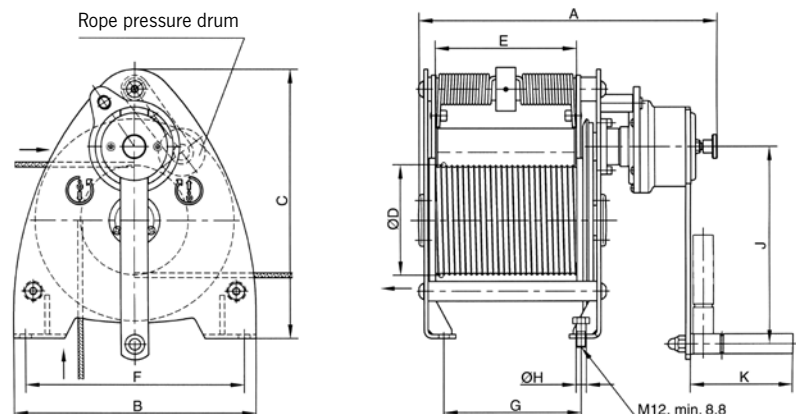
Technical data model Lambda (BGVC1)

Art.-No.	Capacity kg	Rope diameter* mm	Useable rope length 1 st layer mm	Lift per crank rotation mm	Required crank effort daN	Ratio	Weight without rope kg
030272015	300	6	10	50	18	8.83:1	30
030272017	300	6	15	50	18	8.83:1	36

*recommended steel rope: 6 DIN 3069 SE-znk 1960 sZ-spa, (breaking load of the rope min. 30,4 kN)

Dimensions model Lambda (BGVC1)

Art.-No.	030272015	030272017
A, mm	379	469
B, mm	310	310
C, mm	340	340
Ø D, mm	139.4	139.4
E, mm	180	270
F, mm	280	280
G, mm	175	265
Ø H, mm	13	13
J, mm	250	250
K, mm	130	130





Wall-mounted winch with worm gear drive model SW-W-SGG

Capacity 250 - 750 kg

The robust manual rope winches with enclosed worm gear are used in the agricultural industry and in the marine sector.

Features

- Winch housing with enclosed worm gear and additional load pressure brake of solid casting design for a long service life.
- The oil bath lubricated worm gear ensures quiet running characteristics.
- Easy and quick mounting.
- The crank arm is adjustable and makes it possible to work faster with small loads.

Options

- Special paint finish for improved corrosion protection
- Foldable crank with tiltable handle for use in confined spaces.
- Grease lubrication – for modified mounting position
- Grooved rope drum for improved guidance of the rope.
- Drum with separation web for operation with several ropes.

Technical data model SW-W-SGG

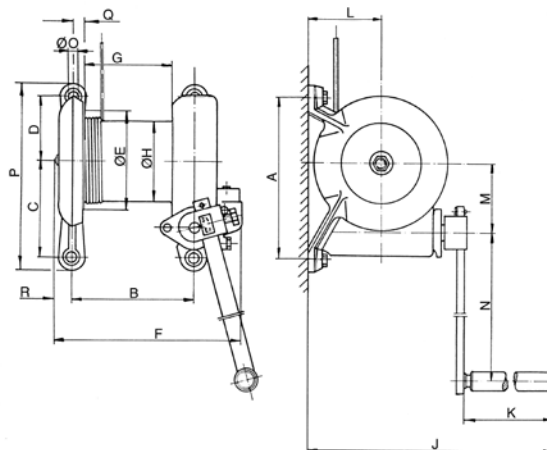
Model	Art.-No.	Capacity 1 st layer kg	Capacity top layer kg	Drum diameter mm	Rope diameter* mm	Useable rope length 1 st layer m	Useable rope length top layer m	Lift per crank rotation mm	Required crank effort daN	Weight without rope kg
SGG 250	030242004	250	210	96	5	4.8	17.9	20	9.2	12
SGG 500	030243000	500	425	125	6	8.1	28.8	26	14.5	22
SGG 750	030244007	750	624	150	8	9.2	48	20	16	43

*recommended rope: DIN 3060 FE-znk 1770 sZ-spa

Technical data model SW-W-SGG

Model	SGG 250	SGG 500	SGG 750
Art.-No.	030242004	030243000	030244007
A, mm	205	250	330
B, mm	137	190	243
C, mm	120	150	205
D, mm	85	100	125
Ø E, mm	135	182	240
F, mm	219	282	350
G, mm	94	138	182
Ø H, mm	96	125	150
J, mm	310	476	576
K, mm	108	238	238
L, mm	96	112	160
M, mm	79	101	146
N, mm	295	430	440
Ø O, mm	12	14	20
P, mm	237	290	390
Q, mm	13	18	20
R, mm	21	25	32

Fall arrest blocks for the transportation of persons, see page 277.



Wall-mounted winch model SW-W ALPHA

Capacity 300 - 1000 kg

A versatile wall-mounted winch for an easy lifting of loads.

Features

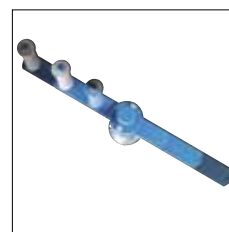
- Light weight robust stamped steel housing and compact design.
- Spur gear drive for optimal efficiency and comfortable handling.
- Rope lead-offs to all directions.
- All parts are zinc-plated for increased corrosion protection, drum with additional special coating.
- Integrated crank with load pressure brake for safe holding of the load.
- Easy and quick mounting onto walls.

Options

- Foldable crank with tiltable handle for use in confined spaces.
- Variable crank with adjustable crank handle.



Option: Foldable crank with tiltable handle for use in confined spaces.



Option: Variable crank with adjustable crank handle.

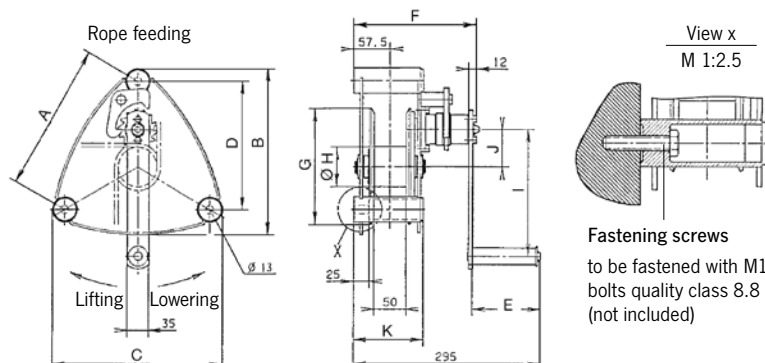
Technical data model SW-W ALPHA

Model	Art.-No.	Capacity 1 st layer kg	Capacity top layer kg	Drum length mm	Rope diameter* mm	Useable rope length 1 st layer m	Useable rope length top layer m	Lift per crank rotation mm	Required crank effort daN	Weight without rope kg
ALPHA 300	030272006	300	130	50	5	1.3	28	57	13	10
ALPHA 500	030272005	500	230	50	6	1	20	55	17	10
ALPHA 750	030272002	750	270	50	7	1	26	45	17	16
ALPHA 1000	030272001	1000	360	50	7	1	26	45	18	16

*recommended rope: DIN 3060 FE-znk 1770 sZ-spa

Dimensions model SW-W ALPHA

Model	ALPHA 300	ALPHA 500	ALPHA 750	ALPHA 1000
Art.-No.	030272006	030272005	030272002	030272001
A, mm	234	234	306	306
B, mm	262	262	337	337
C, mm	274	274	357	357
D, mm	203	203	265	265
E, mm	107	107	107	107
F, mm	194	194	194	194
G, mm	183	183	255	255
H Ø, mm	63	63	63.5	63.5
I, mm	200	250	250	320
J, mm	58.6	58.6	92.5	92.5
K, mm	109.5	109.5	107	107



! For a better guiding of the rope to the suspension point we recommend the use of sheaves or sheave blocks, see page 89.



80 - 125 kg

300 - 750 kg

Wall-mounted winch model SW-W

Capacity 80 - 750 kg

Wall-mounted rope winches of the SW-W model range are intended for fixed stationary mounting inside a building. The steel wire rope is guided to the required suspension point of the load by means of deflection sheaves.

Features

- Robust aluminium housing for models SW-W 80 and SW-W 125, proven steel plate design for models SW-W 300 - 750.
- Spur gear drive for optimal efficiency and comfortable handling. Direct drive for loads up to 125 kg.
- The low-noise safety spring brake safely holds the load in every position.
- Removable hand crank for models SW-W 80 and SW-W 125, foldable crank for models SW-W 300 - 750.
- Easy and quick mounting onto walls.

Options

- Safety retaining spring with removable hand crank.

Technical data model SW-W

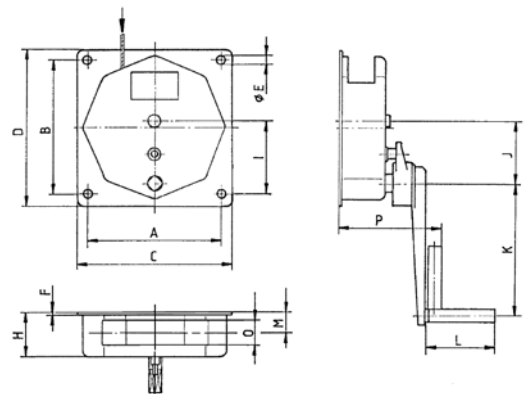
Model	Art.-No.	Capacity 1 st layer kg	Capacity top layer kg	Drum diameter mm	Rope diameter mm	Useable rope length 1 st layer m	Useable rope length top layer m	Lift per crank rotation mm	Required crank effort daN	Weight without rope kg
SW-W 80	040271017	80	45	51	3*	2.4	30	170	12	3
SW-W 125	040271008	125	65	40	4*	2	12	138	13	3
SW-W 300	030271001	300	220	108	5**	2.1	15	68	15	10
SW-W 500	030271136	500	350	108	6**	2.4	15	35	13	11
SW-W 750	030271019	750	550	108	7**	2	10	35	20	11

*recommended rope: DIN 3055 FE-znk 1770 sZ-spa

**recommended rope: DIN 3060 FE-znk 1770 sZ-spa

Dimensions model SW-W

Model	SW-W 80	SW-W 125	SW-W 300	SW-W 500	SW-W 750
Art.-No.	040271017	040271008	030271001	030271136	030271019
A, mm	110	110	250	250	250
B, mm	110	110	250	250	250
C, mm	130	130	290	290	290
D, mm	130	130	290	290	290
Ø E, mm	9	9	14.5	14.5	14.5
F, mm	15	15	2	2	2
H, mm	121	121	85	85	85
I, mm	55	55	138	138	138
J, mm	-	-	117	117	117
K, mm	250	250	250	250	250
L, mm	130	130	130	130	130
M, mm	68	68	39	39	39
O, mm	60	60	50	50	50
P, mm	275	275	192	192	192



Sheave block
for rope guidance,
equipped with ball bearings
model DSRB S

Technical data model DSRB S

Model	Art.-No.	Classification FEM/ISO	Pulling force in kg at deflection 90°	Pulling force in kg at deflection 180°	Rope diameter mm
DSRB S 90/4	033447103	2m/M5	700	500	4
DSRB S 145/5	033447104	4m/M6	1100	800	5
DSRB S 145/6	033447105	2m/M5	1100	800	6
DSRB S 185/8	033447107	2m/M5	2300	1630	8
DSRB S 185/9	033447108	1Am/M4	2300	1630	9
DSRB S 270/12	033447111	2m/M5	2500	1800	12
DSRB S 325/14	033447117	2m/M5	4500	3200	14
DSRB S 400/16	033447113	3m/M6	5000	3800	16
DSRB S 400/18	033447114	2m/M5	5000	3800	18
DSRB S 490/20	033447115	3m/M6	8000	6000	20



Dimensions model DSRB S

Model	DSRB S 90/4	DSRB S 145/5	DSRB S 145/6	DSRB S 185/8	DSRB S 185/9	DSRB S 270/12	DSRB S 325/14	DSRB S 400/16	DSRB S 400/18	DSRB S 490/20
Art.-No.	033447103	033447104	033447105	033447107	033447108	033447111	033447117	033447113	033447114	033447115
B, mm	85	125	125	138	138	191	260	302	302	313
C, mm	90	160	160	195	195	290	350	430	430	580
Ø D, mm	90	145	145	185	185	270	325	400	400	490
Ø D1, mm	20	25	25	30	30	40	50	50	50	65
Ø Dm, mm	80	125	125	160	162	246	297	368	364	450
E, mm	62	88	88	106	106	138	180	212	212	220
H, mm	134	224	224	273	273	407	490	612	612	694
K, mm	65	110	110	135	135	202	242	310	310	340
L, mm	120	200	200	245	245	360	440	530	530	650
Ø M/M1, mm	9/9	11,5/13	11,5/13	13,5/15	13,5/15	18/20	22/25	26/30	26/30	34/40
S, mm	4	6	6	8	8	10	12	15	15	16

