

Hydraulic machine jacks model YAS

Capacity 3 - 25 t

Hydraulic machine jacks are designed for the safe lifting and positioning of machines and similar heavy equipment.

Features

- Integrated hydraulic pump.
- Pump lever swivel mounted 270° for operation even in extremely confined areas.
- Same load can be lifted on either the head or the claw of jack.
- Welded, distortion-proof steel construction.
- High quality, durable hydraulic components.
- The flat lifting claw allows low jacking height.
- The additional connect coupler (10 t capacity and larger) for external pump operation, allows connection of hand, motor or synchronous lifting pumps (max. pressure 520 bar).
- Safe stability due to swivel-mounted support feet.
- Sensitive lowering valve for slow lowering of loads without jerks.
- When operating the jack with an external pump the installation of a manometer is mandatory.
- The integrated hydraulic pump is protected by a pressure-limiting valve.
- The jacks are delivered ready-to-use inclusive of carrying handles, hydraulic oil filling and pump lever.

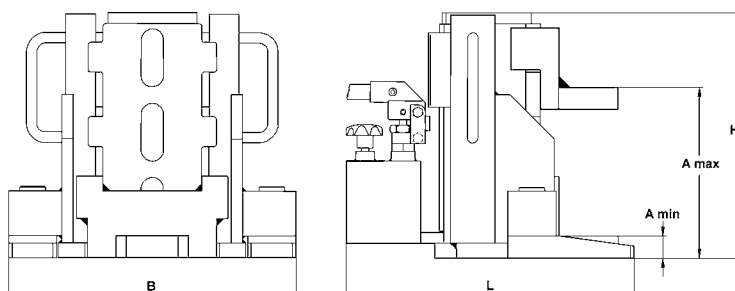


Technical data model YAS

Model	EAN-No. 4025092*	Capacity t	Lift mm	Height for applications min. mm	Pressure max. bar	Weight approx. kg
YAS-3	*160063	3	140	12	520	15.0
YAS-5	*160070	5	140	15	520	19.0
YAS-10	*160087	10	140	20	520	28.0
YAS-15	*160094	15	140	25	520	50.0
YAS-25	*160100	25	140	30	520	72.0

Dimensions model YAS

Model	YAS-3	YAS-5	YAS-10	YAS-15	YAS-25
A min., mm	12	15	20	25	30
A max., mm	230	232	300	291	300
B, mm	207	228	277	328	387
H, mm	250	252	252	316	330
L, mm	198	216	271	345	388



Hydraulic machine jacks model YAP

Capacity 4.5 - 50 t

Hydraulic machine jacks are designed for the safe lifting and positioning of machines and similar heavy equipment.

Features

- These jacks are operated with external pumps, e.g. hand or motor pumps but also with synchronous power packs.
- The compact construction allows operation even in extremely confined areas.
- 3 hook-in positions of the lifting claw provide high flexibility (model YAP-5130 4 hook-in positions).
- The load can be lifted with either the lifting claw or with the head of the jack.
- Welded, distortion-proof steel construction.
- High quality, durable hydraulic components.
- The flat lifting claw allows low jacking height.
- Safe stability due to swivel-mounted support feet.
- The connection between jack and pump is made by a hydraulic hose.
- The jacks are delivered ready-to-use inclusive of carrying handles and coupling half.



Technical data model YAP

Model	EAN-No. 4025092*	Capacity t	Lift mm	Height for applications min. mm	Pressure max. bar	Weight approx. kg
YAP-5130	*160018	4.5	133	15	700	13.5
YAP-10150	*160025	10	155	20	700	23.0
YAP-15150	*160032	15	155	25	700	40.0
YAP-25150	*160049	23	155	30	700	60.0
YAP-50150	*160056	50	155	35	700	165.0

Dimensions model YAP

Model	YAP-5130	YAP-10150	YAP-15150	YAP-25150	YAP-50150
A min., mm	15	20	25	30	35
A max., mm	232	273	291	300	375
B, mm	228	277	328	387	540
H, mm	252	283	316	330	405
L, mm	161	194	245	278	375

